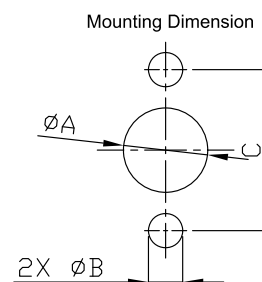
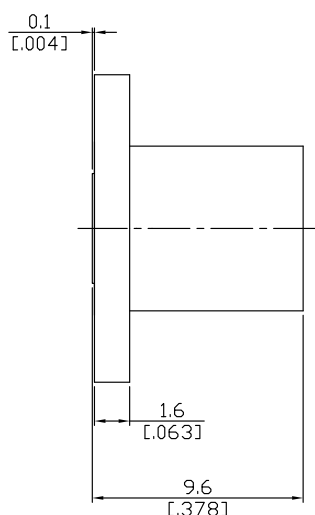
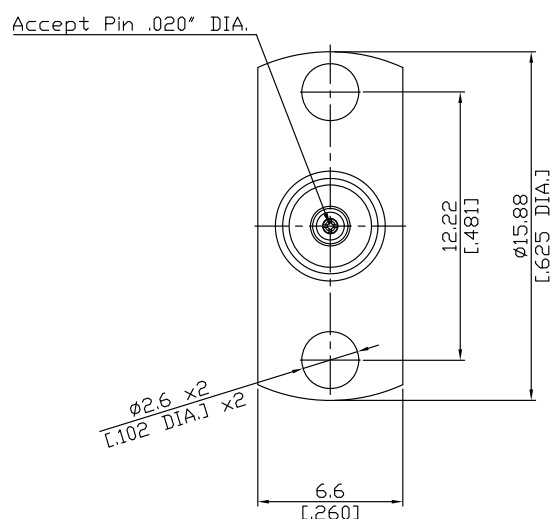


BMA Jack (Female) Slide-On Field Replaceable Connector 2 Hole Flange Mount
0.51 mm [.020 inch] Accept Pin DC-22GHz, VSWR1.25

BMA2BT50-0020A / 9X



	mm		inch	
	Max.	Min.	Max.	Min.
A	2.24	2.16	.088	.085
B	2.65	2.6	.104	.102
C	12.25	12.15	.482	.478

All dimensions are in mm [inch]

Tolerances according to DIN ISO 2768-mH

Interface

According to

IEC 61169-33; MIL-STD-348B/321

Electrical Data

Impedance

50 Ω

Frequency

DC to 22 GHz

VSWR (Return Loss)

≤ 1.25 (≥ 19.08 dB)

Insertion Loss

$\leq 0.07 \times \sqrt{F}$ (GHz) dB

Insulation Resistance

≥ 5 G Ω

Test Voltage (at sea level)

1000 V rms

Working Voltage (at sea level)

400 V rms

RF-leakage

≥ 85 dB up to 1 GHz

Material And Plating

Piece Parts	Material	Plating
Centre contact	Beryllium Copper	Gold plating (Non-magnetic nickel-phosphorus underplating)
Body	Stainless Steel	Passivated
Insulator	PTFE	
Gasket	Silicone Rubber	

BMA Jack (Female) Slide-On Field Replaceable Connector 2 Hole Flange Mount
0.51 mm [.020 inch] Accept Pin DC-22GHz, VSWR1.25

BMA2BT50-0020A / 9X

Mechanical Data

Coupling Mechanisms	Slide-On
Mating Cycles	≥ 1000
Center Contact Captivation	≥ 27 N
Engagement Force	≤ 13.5 N
Disengagement Force	≥ 2.0 N

Environmental Data

Temperature Range	-55°C to +155°C
Thermal Shock	MIL-STD-202, Meth. 107, Cond. B
Corrosion Resistance	MIL-STD-202, Meth. 101, Cond. B
Vibration	MIL-STD-202, Meth. 204, Cond. D
Shock	MIL-STD-202, Meth. 213, Cond. I
Moisture Resistance	MIL-STD-202, Meth. 106
RoHS	compliant

Packing

Single or 100